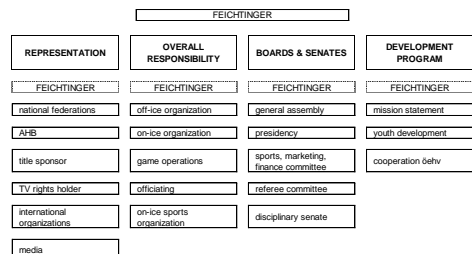


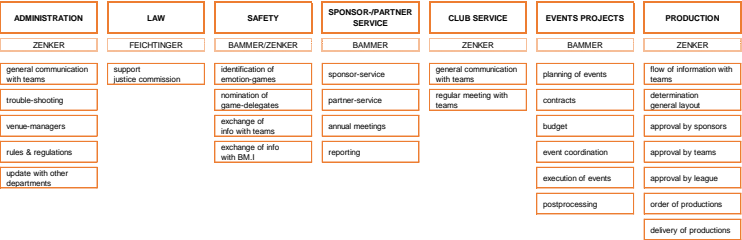
ERSTE BANK EISHOCKEY LIGA ORGANIZATION STRUCTURE 2017/18ff

A LEAGUE MANAGEMENT



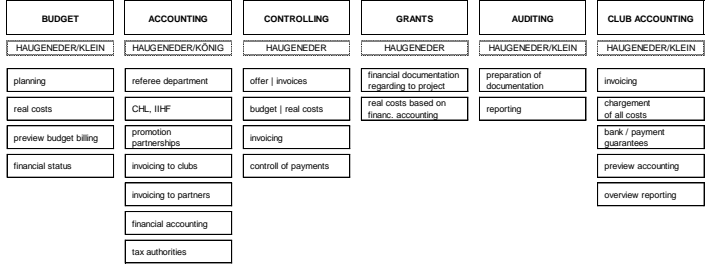
B1 OFF-ICE ORGANIZATION

BAMMER



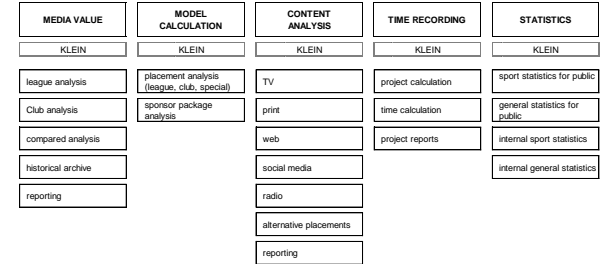
B2 FINANCE

HAUGENEDER



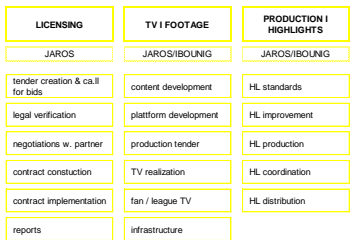
B3 MONITORING

KLEIN



B4 MEDIA RIGHTS | PRODUCTION

JAROS



B5 MEDIA SERVICES

SEIF



B6 SALES

JAROS



SPORT-OM

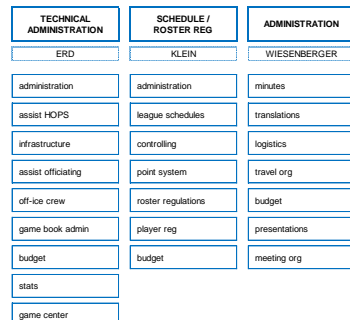
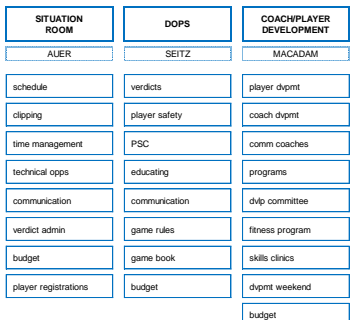
SEITZ

C3 ON-ICE SPORTS ORGANIZATION

SEITZ

C1 GAME OPERATIONS

SÜTTNG



C2 OFFICIATING

KIMMERLY

